



the  
**CROWN OF NOIDA**  
Sec -143A, FNG & Noida Expressway  
(At Sikka Kaamna Greens)







*A CROWN IS  
NOT JUST WHAT SITS  
PROUDLY ON YOUR HEAD,  
BUT THE AURA THAT IT  
BUILDS AROUND YOU.  
IT BRINGS WITH IT,  
A WORLD OF PRIVILEGES  
THAT ONLY YOU OWN.*



# *EVOLVED LUXURY FOR THE EVOLVED MINDS*

*As times, tastes and lifestyles evolve. Well, the luxury would be all about substance over shine, bountiful over boastful and profound over pompous. Welcome to the world, where all this comes alive.*





# ADMIRE THE WORLD GET ENVIED BY IT

*Evolution is the thoughtful way of life, with a sense of maturity. It looks beyond rigidity and constantly strives to embrace a dynamic living, which brings with it fulfilling experiences every day.*







a better tomorrow... a better life...

*The Crowning Glory*

# *LUXURY ON TOP OF THE WORLD*

Twin towers rising G+19 storeys

3 and 4 Bedroom Ultra Luxury Residences

50% of open area green rejuvenation

Club Crown offers a haven of luxurious amenities

Unparalleled 360-degree view of central green and the city

Lifestyle amenities that are a class apart









The logo for 'sikka' features a stylized green leaf icon to the left of the word 'sikka' in a bold, lowercase, green sans-serif font.

a better tomorrow... a better life...







*ICONIC AT THE TOP  
INCREDIBLE AT EVERY LEVEL*





## *NOIDA'S FINEST GARDEN EXPERIENCE IS HERE*

*At Crown of Noida Towers, living up to the unmatched legacy of Sikka, we are transforming green areas like never before. Presenting Crown Park, an unprecedented garden experience in Noida that not only transforms how you look at greens, but also how you indulge in them.*











*2 Levels of curated amenities*

*World-class recreational spaces*

*Tropical theme at the podium level*





## *TWO LEVELS OF WORLD-CLASS LEISURE & LIVING*

*The world of amenities at Crown of Noida Towers is bespoke and one to behold for a lifetime. Split across two grand levels of an elaborate podium, it is a world of treasures awaiting to enthrall you.*









## *THE CROWN CLUB*

*The ones who own the crown, also deserve a space dedicated to rejuvenation & relaxation. Crown Club, with **immaculate size of 45,000 sq.ft.** with **15,000 sq.ft per Floor**, having Gym+Spa facilities on the Ground Floor, Indoor games on First Floor and Swimming Pool on top Floor. The clubhouse at Crown of Noida Towers, creates a cosy world of joy, specially for the kids, so that they stay happy & safe, while growing up.*







Multipurpose Hall • Library Business Lounge • Cafeteria • Gymnasium & Aerobics Zone  
Steam Room • Yoga & Meditation Zone • Indoor Games Room • Table Tennis  
Golf Simulator • Pool Table • Creche + Toddler zone • Private theatre • Swimming Pool  
Kids pool • Box cricket Area • Multipurpose Play Court • Party Lawn Kids play area  
Walking Track • Miyawaki Forest • Landscaped Garden • Senior Citizens Corner





Exclusive  
WFH facility

In sync with today's lifestyle needs, utilise a modern WFH facility whenever you need, loaded with latest office infrastructure.



Pathways &  
pavilions

Walks become memorable and conversations unforgettable at these delightful avenues.



Multipurpose  
play court

The athlete in you gets a stage to express freely with this world-class facility

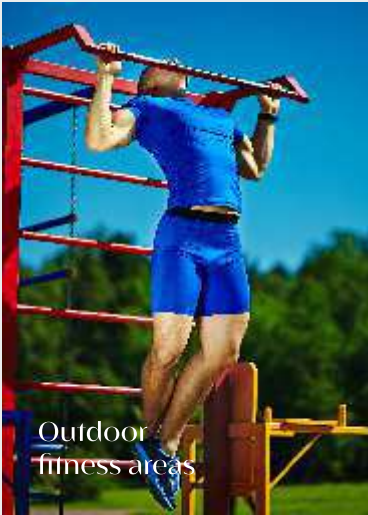


Garden  
spaces

Well-maintained and well-mowed green garden spaces welcome you to pause and enjoy life



## *FITNESS THAT SETS A NEW BENCHMARK.*



If you enjoy a fitness session in the open, Crown of Noida has ample and equipped spaces for you and your routine



A well-equipped gymnasium at the ground floor that makes sure you don't have to skip a workout, whether it's rains or the sun beating down



Keep your fitness in top shape or just walk around for that sense of wellness around this well-designed jogging path



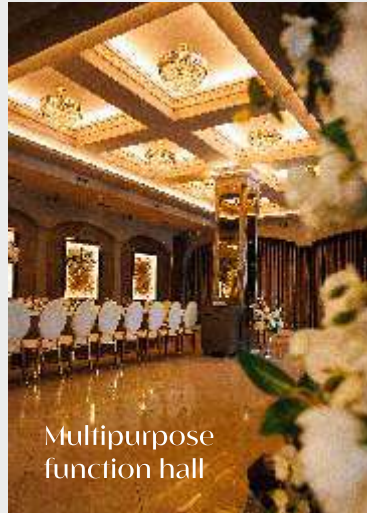


## REJUVENATION SIMPLY ON TOP OF THE WORLD.



Al-fresco dining

A dining space at Club with an out-of-the-world ambience to make your meals and conversations unforgettable.



Multipurpose  
function hall

Club House is equipped with a space for your celebrations that is exclusive and literally on top of the world. From parties to ceremonies, make them special



Multiple gardens

Enjoy greens and landscaping at Crown of Noida that lets you relax and rejuvenate, while you look around at the skyline.



Barbecue pits

Hosting Parties at open areas with barbecue pits at Clubhouse get a delicious menu as you can flaunt the chef in you, right here



Jacuzzi

Enjoy a cosy space of blue therapy with a jacuzzi at Clubhouse that gifts you happy moments of relaxation



Swimming pool

On top of the world, indulge in play time with friends & family at Swimming pool or find some me-time for yourself.



*INSIDE  
A WORLD  
YOU WOULD  
LOVE TO  
CALL  
HOME.*

*Well-crafted 3 and 4 Bed Residences*

*Cohesive designs for ample space and privacy*

*Expansive views of the horizon on all sides*

*Fantastic ventilation and natural light*

*Balconies that seamlessly integrate indoors & outdoors*





*When you step out of elevators and unlock the door to a residence, the glory of living at Crown of Noida Towers, is yours to experience. The indoors, across all diverse configurations, cater to a holistic living experience for the modern urban family. From space design to utility, every facet gives a sense of being on top of the world.*

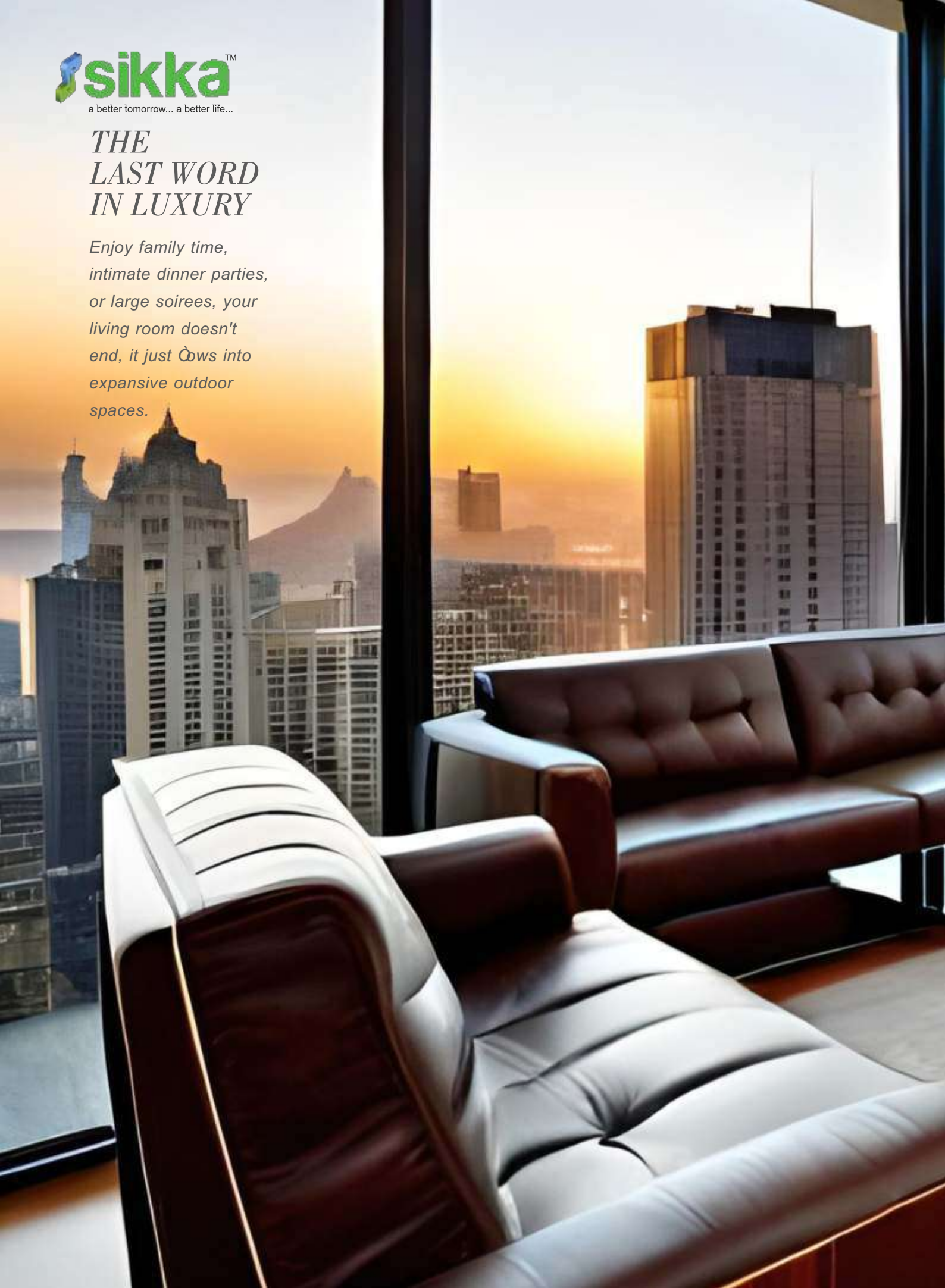




a better tomorrow... a better life...

## *THE LAST WORD IN LUXURY*

*Enjoy family time,  
intimate dinner parties,  
or large soirees, your  
living room doesn't  
end, it just flows into  
expansive outdoor  
spaces.*















## *SOLITARY BLISS*

*The bed suites in your residence  
have been designed to allow in  
an abundance of air.*



*THE ART OF  
LUXURY  
COOKING*







*BESPOKE  
BATHROOMS*



# *CRAFTED WITH JEWELS OF PERFECTION.*

*ACs in all bedrooms & Drawing Room*

*Modular kitchen with chimney*

*Digital locking system*

*Main entrance door with veneer finish and polish*

*Branded chrome finished bathroom fittings*

*Aluminium/UPVC single windows*

*Gypsum plaster for ceiling and walls*

*Premium double glazed flooring*

*Wooden flooring in master bedroom*

*Branded door fittings*

*Designer sanitary ware*

*Designer dado in toilet up to 7 feet*

*Geysers in all toilets & kitchen*

*Concealed plumbing*

*Exhaust fans in toilets and kitchen*

*PNG gas supply*

*Light and fan fittings in all rooms and kitchen*

*Fire detection and fire suppression systems*

*Mivan technology used to construct walls and slabs*

*Covered & reserved Double-car parking*

*1st Transfer free of cost*













## ***FEATURES***

- A) DROP - OFF POINT**
- B) CLUB HOUSE**
- C) PODIUM**
- D) JOGGING TRACK**
- E) MEDITATION & YOGA**
- F) KIDS PLAY AREA**
- G) PLAY AREA**
- H) WATERBODY & FOUNTAIN**
- I) DEDICATED PARKING**
- J) PLAZA**
- K) FOUNTAIN**
- L) PODIUM BRIDGE**
- M) STAIRCASE FOR PODIUM**



## *A CROWN SURROUNDED BY HASSLE-FREE LIVING*

### TOP-CLASS INFRASTRUCTURE

Assured water and power

Water Filtration & Treatment Plant

Private Fire Station

Round-the-clock security

### TOP OF THE WORLD LIFESTYLE

Club with elite membership

Mall of Noida for immersive

shopping, dining and fun experiences

Sports arena

### TOP-QUALITY SUSTAINABILITY

Sewage Treatment Plant

Acres central greens

Facility management by IPC

### TOP-LEVEL CONVENIENCE

Operational Schools Near The Township

Safe Walk-to-school Concept

24 X 7 Help Desk

Separate Township Management Company





# A CROWN SURROUNDED BY HASSLE-FREE LIVING (LOCATION)





# BRIGHT 3BHK + UTILITY

**Carpet Area**  
1010 Sq. Ft.

**Super Area**  
1650 Sq. Ft.





# BRIGHT 3BHK + UTILITY

Carpet Area  
1205 Sq. Ft.

Super Area  
1800 Sq. Ft.





# BRIGHT 3BHK + SERVANT ROOM + UTILITY

**Carpet Area**  
1261 Sq. Ft.

**Super Area**  
1900 Sq. Ft.



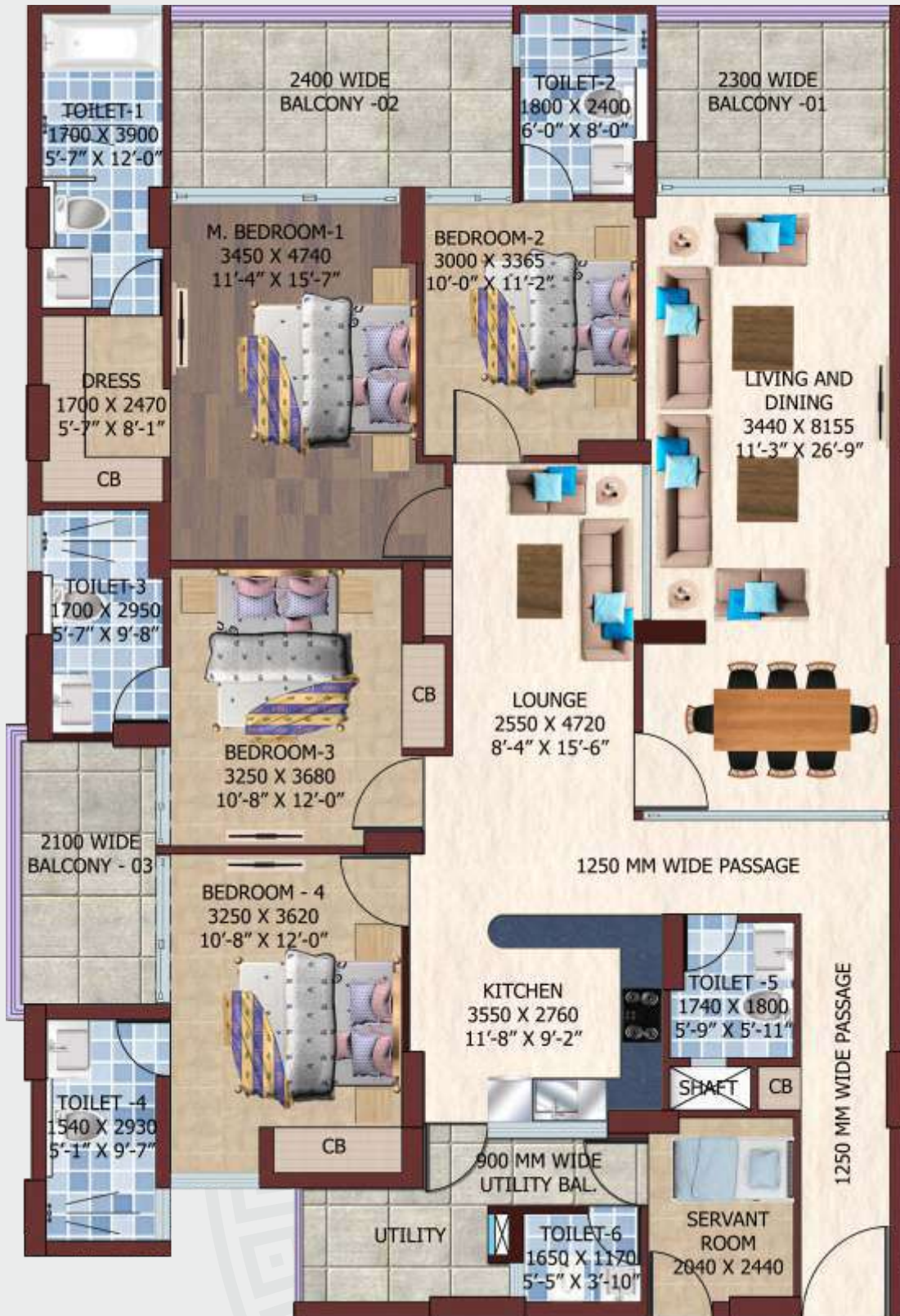


# CROWN 4BHK + SERVANT ROOM + UTILITY



**Carpet Area**  
1745 Sq. Ft.

**Super Area**  
2485 Sq. Ft.



▲  
ENTRANCE



## FORTUNE / PARADISE 2BHK + UTILITY

**Carpet Area**  
819.24 Sq. Ft.

**Super Area**  
1540 Sq. Ft.





# FORTUNE / PARADISE 3BHK + UTILITY

Carpet Area  
901.48 Sq. Ft.

Super Area  
1705 Sq. Ft.





# SPECIFICATIONS

## GENERAL

- Earthquake resistant structure zone IV compliant construction designed by highly experienced structural engineers

## SUPER STRUCTURE

- Sheer wall structure with columns R.C.C. slabs & beams with brick wall partitions in between
- Floor to ceiling height is 11 feet
- Glass Railing
- Height of all the doors is 8 feet

## AIR CONTITIONING

- AC System in Living / Dining, Family Lounge and all Bedrooms (Carrier / Hitachi / LLOYD / Toshiba or Equivalent.)
- Floor level approx 3225mm (10'5") finished floor to slab.

## CEILING

- POP Punning with cove as per design : OBD paint (ICI / Asian / Berger or equivalent)

## FLOORING

- Italian Stone flooring in Drawing / Dining / Bedrooms
- Wooden flooring in Master Bedrooms
- Anti-skid ceramic tiles in kitchen, toilet & balcony
- Italian marble stone in corridor, lift, lobby and staircase

## DOORS AND WINDOWS

- External Doors & Window with UPVC and high performance glass
- Internal doors in hardwood frames with laminated flush doors
- Entrance Door – Decorative finish in teek wood

## KITCHEN

- Granite top working platform
- Modular kitchen with all fittings.
- Stainless steel sink
- Ceramic glazed tiles above working platform with chrome finish sanitaryware

## TOILETS

- Provision for hot and cold water
- Glazed tiles in pleasing colours on walls up to door level
- European WC's, washbasins & light shaded cisterns of

## INSIDE WALL FINISH

- Inside wall with POP and one concept wall in all room, acrylic emulsion paint

## ELECTRICALS

- Modular and elegant light and power points, cable TV and telephone points in drawing room and master bed room. Copper wires in concealed PVC conduits with MCB

## EXTERNAL FINISH

- Modern and elegant outer finish with high quality paint/stone with plaster & decorative
- Lobby/Entrance lobby wood/tiles up to 7 feet and texture paint

## EXTERNAL FAÇADE

- Exterior with superior paint finish

## TOWER ENTRANCE LOBBY

- Cantilevered portico with Entrance Lobby grandeur common entrance lobby. Air Conditioned Reception area with CCTV Camera surveillance. Imported marble stone being natural material. Variation in colour texture and cracks shall be acceptable. Grand chandelier in lobby.

## CLUB

- Dedicated 2 lifts from ground to club level club on terrace having state of art facilities with panoramic view of city skyline airconditioning landscaped terrace. Infinity Swimming pool with kids pool steam.

## INTERCOM FACILITY

- Provision of intercom facility in each flat

## WATER SUPPLY

- Underground and overhead water tanks with pumps for uninterrupted water supply

## PNG GAS PIPELINE

- Provision of gas pipeline infrastructure

## HIGH-TECH SECURITY

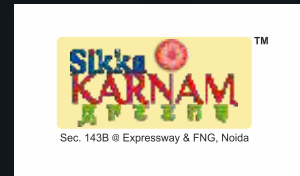
- Hi-tech security system, safety alarm, safety camera
- High-speed Broadband
- Integration of common area Wi-Fi & CCTV system



# DELIVERED PROJECTS



**Sikka Karmic Greens**  
Sector 78, Noida



**Sikka Karnam Greens**  
Sec-143B, Noida



**Sikka Kaamna Greens**  
Sector 143A, Noida



**Sikka Kimaya Greens**  
Doon IT Park, Aman Vihar,  
Dehradun, Uttarakhand 248001



**Sikka Kimaantra Greens**  
Sector 79, Noida



**Sikka Kingston Greens**  
CDA Office, Near RTO, Dehradun,  
Uttarakhand 248001



**Skyhomes**  
Sector-143 B, Expressway  
& FNG, Noida



Sec-143B, Noida



Sec-143 A  
Expressway & FNG, Noida



**Sikka Karmic Greens**  
Sector 78, Noida

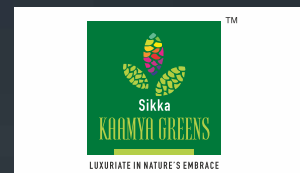


**Sikka Kapital Grand**  
G9M5+GC6,  
Sector 98, Noida

# ONGOING PROJECTS



**Sikka Mall Of Noida**  
Sector 98, Noida



**Sikka Kaamya Greens**  
Sector 10,  
Greater Noida West



Doon IT Park, Aman Vihar,  
Dehradun, Uttarakhand 248001



**Crown of Noida**  
FNG Noida Expressway



Expressway, Omega II  
Greater Noida



Bhagwanpur, Roorkee  
(Uttarakhand)



Sector 79, Noida





[www.sikka.in](http://www.sikka.in)

## Kindle Infraheights Pvt. Ltd.

Corporate Office: "Sikka House" C-60, Preet Vihar, Delhi-110092, India | E: [info@sikka.in](mailto:info@sikka.in)

Site Office: Sikka Kaamna Greens, 143 A, FNG & Noida Expressway

Join us at: 

Member of: **CREDAI**

